

Empowering Young People



STUDENT WORKFORCE VISION

Sport used as a vehicle to equip young people with skills and attributes to achieve in life.

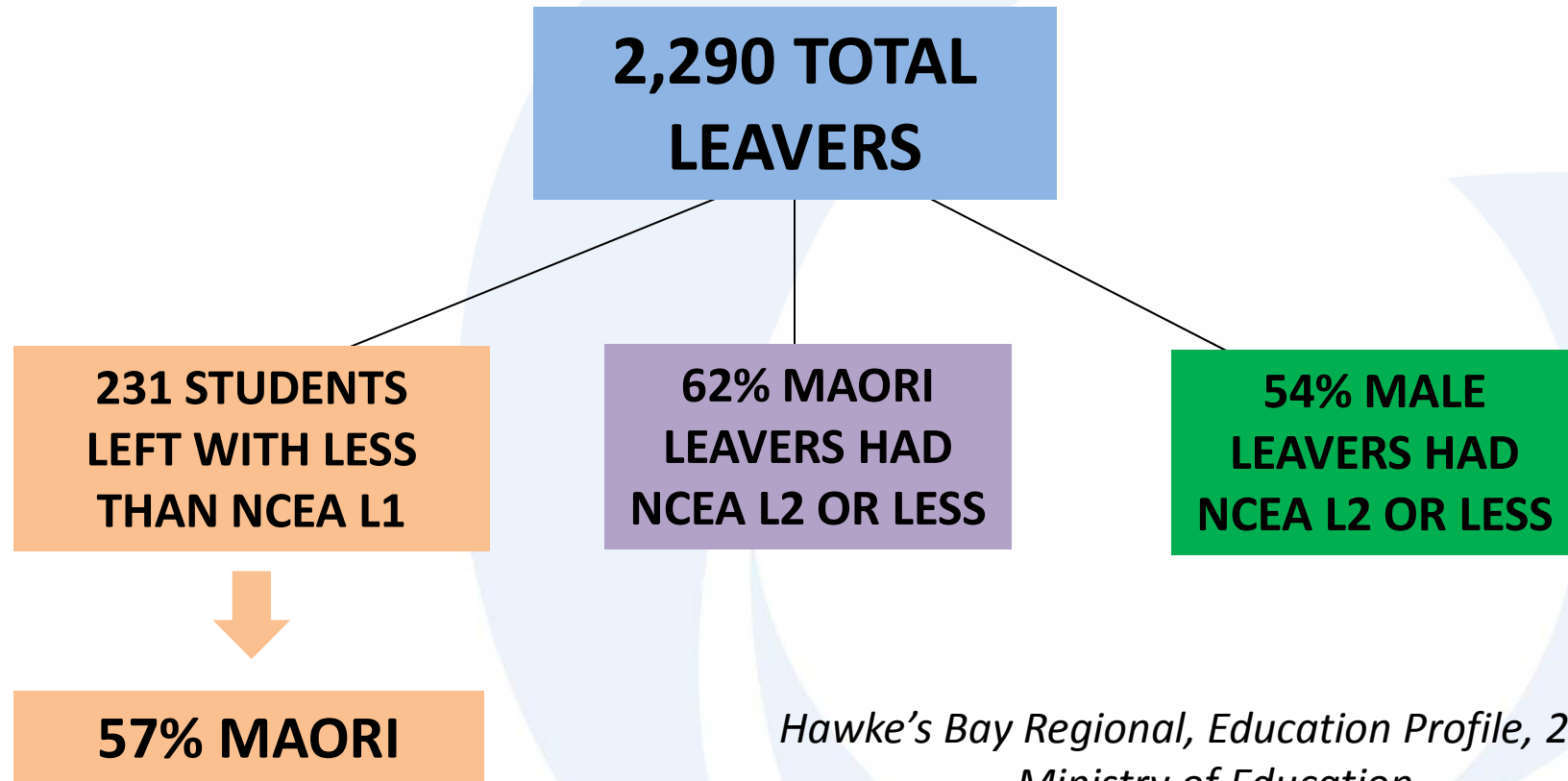
SECONDARY SCHOOLS VISION/MOTTO

William Colenso College
Aspire, Act, Achieve

Taradale High School
To nurture individual potential

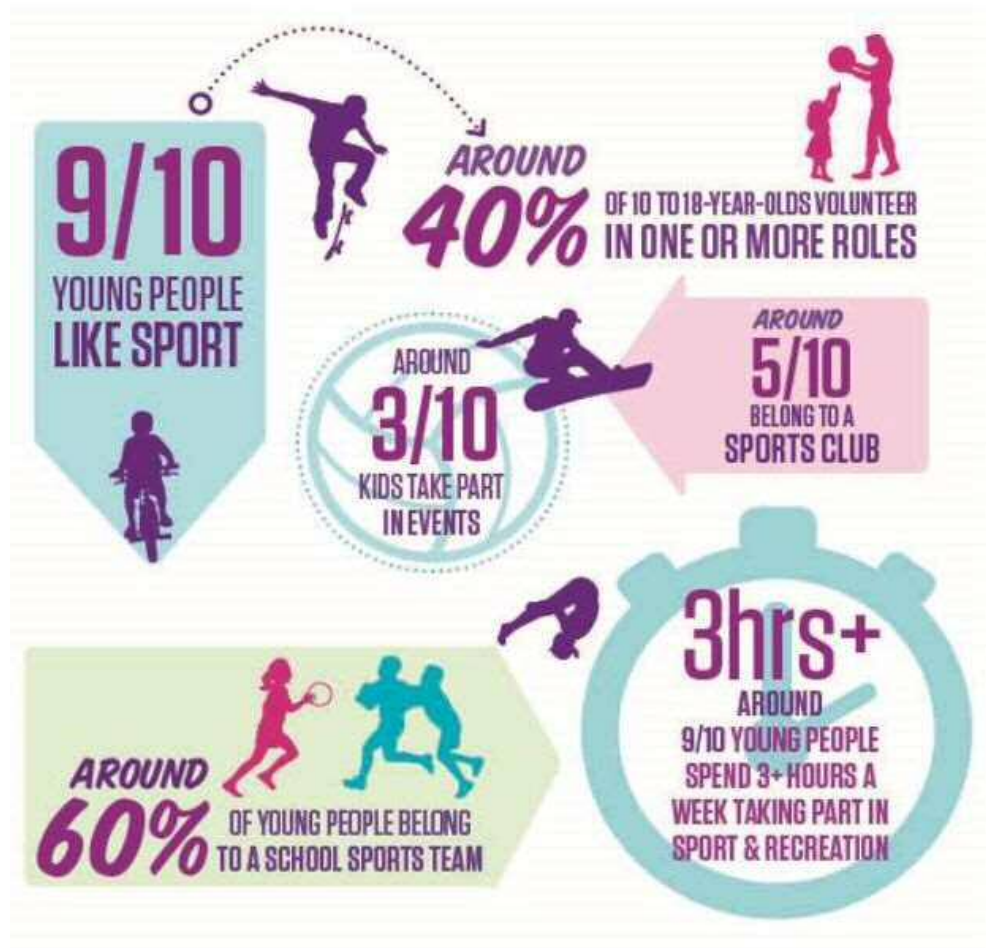
Flaxmere College
Student success is the only option

2015 SECONDARY SCHOOL LEAVERS – HAWKE’S BAY



*Hawke's Bay Regional, Education Profile, 2015.
Ministry of Education*

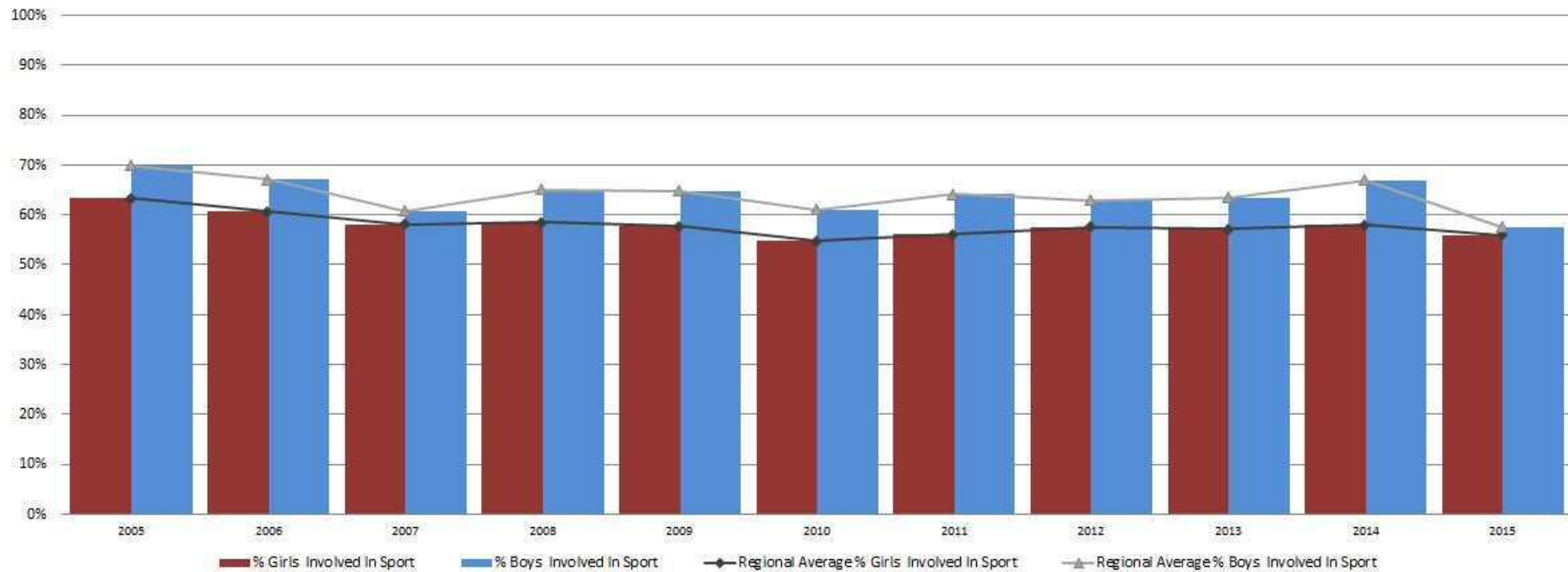
STATE OF THE GAME: GISBORNE/HAWKE'S BAY REGIONAL PROFILE



*SPORT NEW ZEALANDS 2011
YOUNG PEOPLE'S SURVEY*

STATE OF THE GAME:NZSSSC Census Data

Secondary Student Girls & Boys Participation Rates In Sport



STUDENT COACH INVOLVEMENT IN SPORT

2013 – 178

2014 – 181

2015 - 185

STATE OF THE GAME

Sport Hawke's Bay Year 9 and 10 Survey 2016 – 921 participants

- 82% play sport
- 70% played sport at year 8 and STILL play sport
- 10% played sport at year 8, but DON'T play sport now
- 9% didn't play sport at year 8, but PLAY sport now
- 11% didn't play sport at year 8, and STILL don't play sport now
- 52% said they play sport now and WILL play sport when they leave school
- Barriers to sport: 54% too busy, 44% too expensive, 35% not fun
- Influencers: 62% friends, 59% parents

SPORT HAWKE'S BAY EMPOWERING YOUNG PEOPLE

PHYSICAL ACTIVITY LEADERS

- Delivered to Year 5 and 6 students
- 1 day of 6 stations. 3 workshops (communication, leadership, trouble shooting) and 3 physical activities
- 4 days – 3 Napier, 1 CHB, 1 Wairoa
- 2016 – 600+ students

SECONDARY SCHOOL WORKFORCE PROJECT

- Growing Coaches delivery – 4 schools
- Student empowerment programme – 9 schools
- Regional student sport leadership workshops – 3 workshops
- Student council led lunchtime activities project – 15 schools

SPORT HAWKE'S BAY EMPOWERING YOUNG PEOPLE

2017 – NEW PROJECTS

YEAR 9 AND 10 COED CUP

- Term 4 2017
- 3 sports – 1 day
- Student driven
 - Student council organised
 - Student workforce coach and officiate

SECONDARY SCHOOL WORKFORCE AND PALS SYNERGY

- High school students supporting PALS workshops delivery – term 1 2017
- In school support – feeder schools

STUDENT WORKFORCE VISION

Sport used as a vehicle to equip young people with skills and attributes to achieve in life

SECONDARY SCHOOLS VISION/MOTTO

William Colenso College
Aspire, Act, Achieve

Taradale High School
To nurture individual potential

Flaxmere College
Student success is the only option

Sport Hawke's Bay

Sports House,
Pettigrew.Green Arena, 480 Gloucester Street
P O Box 7537, Taradale, Napier, 4141
Phone: 06 845 9336

