



Eastern & Central
COMMUNITY
TRUST

Helping fund a stronger community

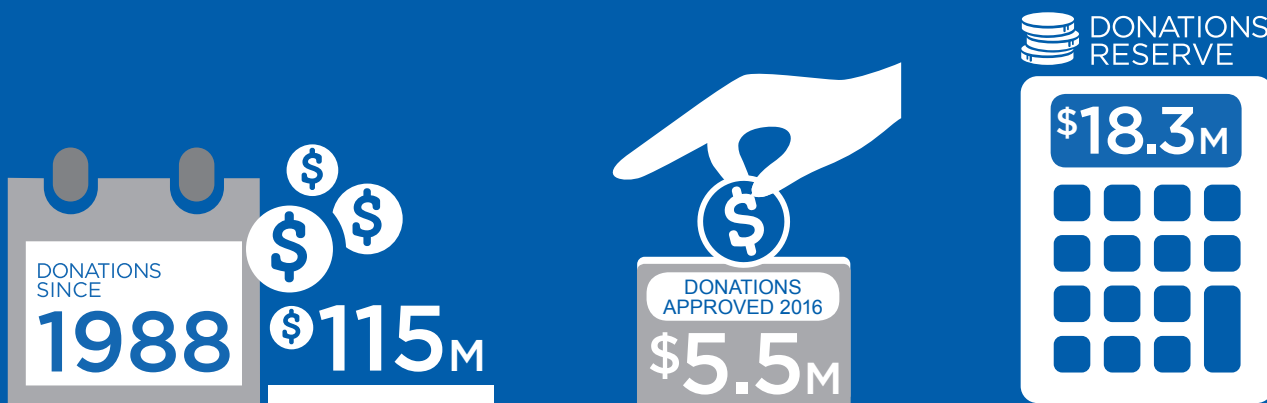
ANNUAL
REPORT
2016

CONTENTS

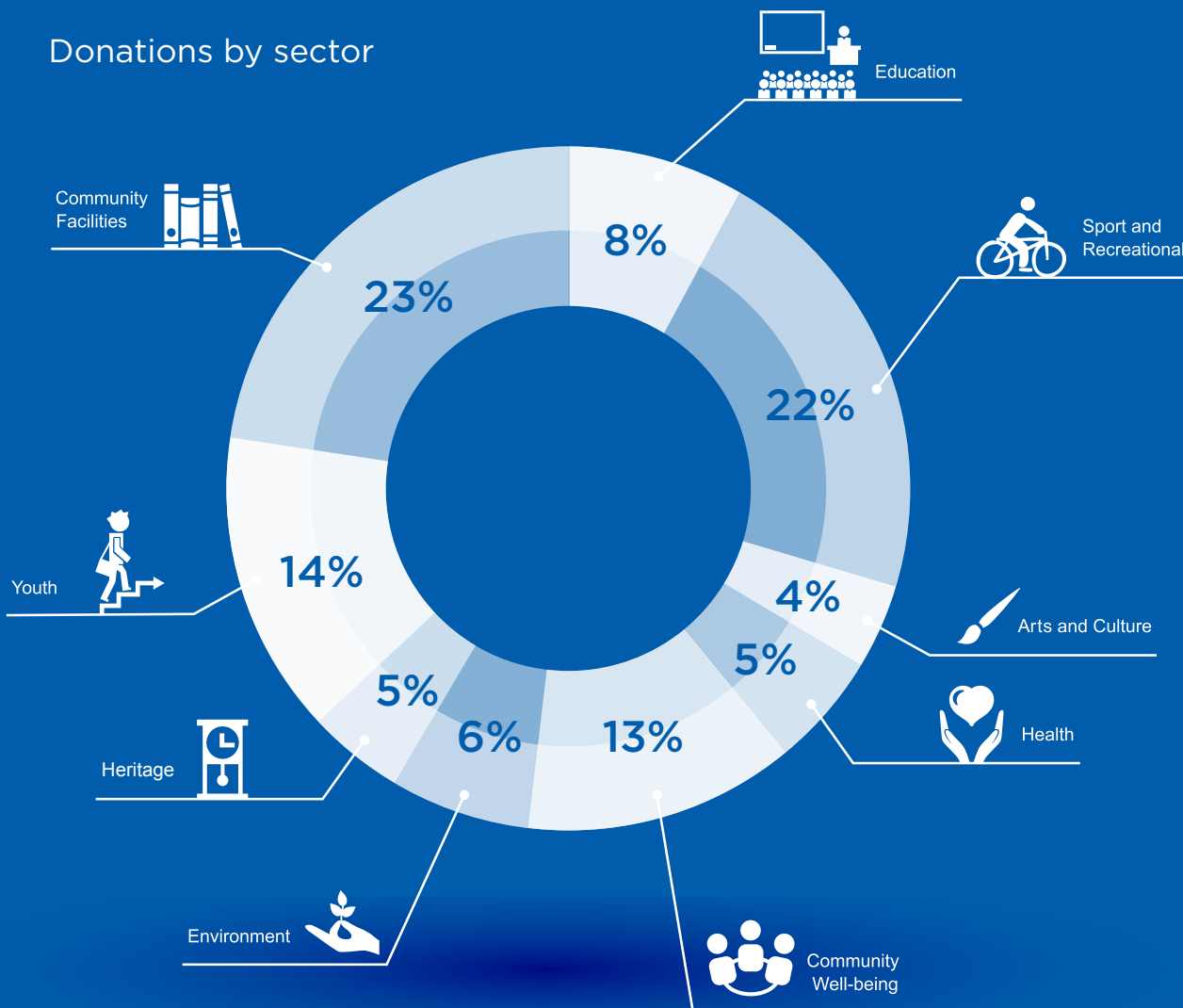
- 3** Highlights
- 4** Chair's report
- 5** General manager's report
- 6** Our community's stories
- 24** Trustees and Staff
- 25** Schedule of community payments
- 26** Summary financial statements
- 28** Notes to the summary financial statements
- 29** Independent auditors' report
- 30** List of donations by region
- 34** Directory



HIGHLIGHTS



Donations by sector



Tēnā koutou, tēnā koutou, tēnā tātou katoa. Greetings, greetings, greetings to one and all.
Welcome to the 2016 Annual Report of the Eastern and Central Community Trust.

Chair's Report




Geoff Milner

TRUST IS IN A STRONG POSITION

The Trustees continue to count it an honour to serve our communities and build on the legacy that previous Trustees have laid for our current Board. Whilst we endeavor to add our own unique stamp on the organisation, generally speaking, our uniqueness will only ever be at the margins in terms of our investment, distribution or administration policies. We are committed to handing the organisation to the next Board in a better position than when we joined.

The Trustees continue to seek evolutionary improvements rather than revolutionary change for change sake. However, given the communities we serve are not static, the Trust itself cannot be static and we have spent as much time during 2015/16 looking to the future as we have to the here and now.

MORE THAN GIVING

In last year's annual report we outlined that doing more than giving represented a key platform for the present Board. As a Board we are exposed to changes in the wider philanthropic sector with trends such as investing for impact, catalytic philanthropy, strategic grant-making, evaluation frameworks just to name a few.

The Trust invests in Board and Staff development through a range of Community Trust and broader philanthropic sector conferences that expose the Trustees to new ways of providing support to our communities for greater impact. As a responsible Board, we cannot put our heads in the sand and ignore these trends and continue to operate the way we have done for the past 25 years. Indeed, many of these trends are in response to changes in our communities.

During the year, the Trust tested a number of new initiatives as part of its more than giving strategy and these initiatives included:

- Guarantee against loss agreement for a major community event (Wairarapa Air Show)
- High-trust funding relationships leading to a major change in engagement (Regional Sports Trusts)
- Initiated an investigation into a new pilot project within the Science realm, and
- Approved a collaborative initiative (Marae Whakaute as per the General Manager's report).

These new donation tools merely provide the Trust with new ways to support our community and demonstrate our commitment beyond just writing a cheque!

Your Board will continue to spend a significant amount of its efforts next year on reviewing its Donation Policy in an attempt to make it very clear to our beneficiaries who are considering making an application for ECCT support.

However, as mentioned last year the Trust will, in the foreseeable future, continue the support of grassroots community groups. The Trust will also continue to focus on making sure that the buildings and large community facilities meet the changing needs of our communities and are well-used for many years to come.

FINANCIAL RESULTS

The song "what a difference a day makes" rang true for the Trust in being able to report a \$1.2M surplus for the year. Our results to 29 February 2016 had us on a deficit path but such are the swings and roundabouts in the investment and currency markets, valuations of our investments turned in our favour and we report a positive year-end result.

The Trustees are pleased with this year-end result, that whilst it is down on the significant \$14.1M result last year, those who follow the financial markets will know that 2015/16 was a more difficult year and considering the \$1.2M surplus is after donations to our community of \$5.2M, the result provides a strong platform for next year.

The Trust has undertaken formal reviews of its Independent Financial Advisor, its various Fund Managers during the year and Trustees are satisfied with the performance of those organisations charged with growing the value of our \$166M of investment assets as well as generating sufficient income to allow the Trust to make its donations to the community.

TRUSTEES

As most of you will know, it is the Associate Minister of Finance who makes appointments to the Community Trusts. During 2016, the Minister confirmed the reappointment of Trustees Milner, Kerr, Kilmister and Garrod.

These reappointments provided the Trust with strong continuity during 2015/16 which allowed the Board to continue its work with a strong team approach which benefits the Trust enormously.

I wish to acknowledge the work our Sub-Committee Chairs during 2015/16:

- Shelly Mitchell-Jenkins (Chair of the Audit & Risk Committee)
- Dame Margaret Millard (Chair of the Special Projects Committee).

In addition to the above Sub-Committee Chairs, it is also pleasing to acknowledge the contribution from Trustees to supporting the Board and staff outside of formal Board meetings as required.

OUR STAFF

We recognise as Trustees that we work “part-time” in the organisation and it is our staff lead by General Manager Jonathan Bell that work everyday on behalf of the Trust. The Trustees are pleased that after a few years where long-serving staff members chose to retire or took new career opportunities, the Trust has benefited from a year of consolidation with a stable and full complement during 2015/16. I would also like to acknowledge the contribution of some contractors to the Trust who, for all intent and purposes form part of our team at Trust headquarters.

On behalf of our Board, I would like to publically thank our General Manager for his leadership and support during the year. As Jonathan Bell will attest, it is challenging working with a Board of twelve where we value and encourage everybody to make a contribution and challenge in an open and constructive manner, the business and direction of the Trust.

In closing, it will be a privilege to report back to our community at our upcoming Annual Public Meeting, which will be held in Gisborne in August 2016. As the Chair and Trustee from Gisborne, there is nothing like reporting back to those physically from your local community albeit the annual report covers our large region from Potaka on the East Cape (Gisborne District) to Manakau in the Horowhenua and the Wairarapa.

General Manager's Report




Jonathan Bell

The past twelve months seem to have flown by faster than ever before, perhaps this is in part a result of us getting older. This past year has been one of contrast, volatility in global markets and returns and stability in people and our core business of grant making.

On the financial side, global investment markets have had a turbulent year. Our investments have been maintained at levels similar to the end of March 2015 which, given some overseas markets, is a good result. We expect that this volatility will continue into the next financial year.

Our cash income from dividends and interest was maintained at similar levels to last year, but our net income from fair value movements was at a much lower level, this was a direct result of market volatility. We maintained our level of expenditure and continued to make donations to our communities at similar levels to last year.

The Community Trusts upgraded their internal Grant Management System which has helped staff in the processing of applications and the internal reporting requirements we have. There has been no impact on applicants and the process that you follow has remained unchanged.

Since introducing our online applications through the web portal we now receiving over 50% of our applications via this method and this number is steadily increasing.

As reported in last year's annual report we indicated a number of new initiatives which we were considering. We have implemented a Guarantee against Loss policy to assist organisations running community events, and have been involved with funding groups to run workshops on the new financial reporting standards which come into effect from this year onwards.

We have also been involved with the development of Funders Forums in the Manawatu and Wairarapa. These forums are an opportunity for local funders to get together and share information and work collaboratively on projects. In the Hawke's Bay the funder's forum has worked collaboratively on a number of projects. An example of one such project is the Marae Whakaute project involving the refurbishment of a number of local Marae in the Hawke's Bay. The partners included Ngati Kahungunu, local Marae, Hastings District Council, Department of Internal Affairs, Hawke's Bay Foundation, Flaxmere Licensing Trust, Gemco Construction, Eastern Institute of Technology (EIT) Trades School and ourselves. By working collaboratively the project was able to raise just over \$1 million to ensure that Marae would be ready to host the Te Matatini Festival in 2017, and provide trade training for students from EIT.

We have changed the format of our funding clinics and will continue to refine these as time goes on. Traditionally we have held one-on-one meetings with applicants to discuss specific projects or answer questions, many of which were quite common. Our clinics now involve other funders, there is an open forum for participants to ask questions and there is still the time for that one-on-one interface to discuss specific projects or concerns.

Our focus for the coming twelve months is around our review of our funding strategies and framework. Once we have completed this we will begin to review and refine our donations policy. Much of what we currently do, especially the small community-based donations will not change. What we would like to consider in the future is how we can partner with other funders and government agencies to address some of the “wicked” problems which undermine the fabric of our society.

We have had stability with the reappointment of four Trustees in July last year, staff have remained unchanged and recent reviews of our Fund Managers and Fund Advisor have resulted in their reappointment. This consistency and stability has allowed us to continue to work hard in ensuring that you, the community organisations which help strengthen our communities, are able to do the work that you do.

BUILDING STRONG COMMUNITIES

One aim of the Eastern and Central Community Trust is to work with groups that identify community need and show a commitment to helping themselves.

Support for grass roots community groups is strong and the Community Trust is keen to work collaboratively with partners to make it easier for such community groups to carry out their activities.

Gisborne's Te Ora Hou is an example of an organisation committed to improving the lives of those it touches, particularly youth, and to make its community stronger.



Te Ora Hou is solving a community problem that came to light when young children, roaming a local Kaiti street, took interest in a new mother's baby and their daily attendance at her house grew into an unofficial after-school programme. She asked Te Ora Hou if it could help provide support.

With experience delivering alternative education programmes for troublesome children in the area, Te Ora Hou stepped in to meet an emerging need for these younger children.

The result is the formation of clubs to which the youth belong. There is a boys' club for eight to 10 year olds and two girls' clubs: one with 25 younger girls and a senior group of 11 to 18 year olds.

Te Ora Hou has a couple of simple principles in its drive to transition kids with challenging behaviour into adults who are more connected to their communities: be consistent and for kids to have fun, respect and to care for others.

And, as Te Ora Hou Manager Jason Akuhata-Brown says, it's easier to change behaviours when children are young. More than 50 young people are now regularly attending the weekly clubs. There are more than a dozen volunteers involved and the clubs are providing values, role models and mentors to help the previously at-risk youth.

"It might be only once a week, but we're making a big impact in a short time," says Jason.

"They're becoming leaders, believing in themselves, their mana is growing and we're seeing their behaviour change."

There are lots of volunteers involved, many whose backgrounds differ greatly from those of the children, but it's helping bridge community differences and making a positive change for all involved. Support from the Eastern and Central Community Trust is contributing to the costs of involving more whanau, identifying their strengths and skills so they, too, can help the youngsters.

In a great show of community spirit, Te Ora Hou and another local group, Ka Pai Kaiti, worked together to resolve a problem caused when children, jumping into the water from a rail bridge, were blocking the path of Gisborne's vintage steam train tourist excursions. By encouraging leadership and responsibility among the children, the train and swimmers happily share the bridge.

"It's great that the Eastern and Central Community Trust is investing in this younger age group and putting a focus on them," says Jason.

"As these kids transition into senior members we're able to connect them to other agencies - there are layers of good resources. Kids can be bad or they can become amazing influencers," he says.



GETTING OUT OF SINGLE SILOS

When Gisborne police were called to 36 domestic incidents in the same street in just one week, the Ka Pai Kaiti Trust knew it needed to do something for the children involved in those situations.

Its answer was to give the kids some free fun and food, along with good experiences that would stay with them and help them see the opportunities ahead. Ka Pai Kaiti was already supporting its community, with clothing, furniture and food banks, and working closely with a range of social agencies. But it sprang into action, organising 'Whanau in the Park' events at local Kaiti parks where bouncy castles, training rides and fun activities made the day.

Community activator Tuta Ngarimu says it's helping tackle poverty and social issues with more than 300 children coming to each park event – many of them picked up and delivered home by volunteers.

A highlight in the recent year is the role Ka Pai Kaiti has played in working alongside the Ministry of Education to encourage enrolment of youngsters in early childhood education.

"Those kids who haven't been to preschool education are behind from day one when they get to primary school," says Tuta.

Ka Pai Kaiti is also working with the neighbouring group, Te Ora Hou Te Tairāwhiti Charitable Trust, on a series of youth projects.

"It's about sharing information and resources, and getting everyone out of their individual silos," he says.

The response to Ka Pai Kaiti's work is that others in the community are donating goods and services, volunteering and helping support the goal of making Kaiti an even better place to live. As Tuta says, it's about building trustworthy connections with the community and involving the elders.

"We're known as the sausage kings, constantly selling sausage by sausage to raise money and the financial help from the Eastern and Central Community Trust means our volunteers can have a small rest," says Tuta.





BELONG, BELIEVE, BECOME SOMETHING

Giving troubled young people a chance to become part of their local community and to feel like they belong is the underlying aim of the Hawke's Bay Youth Trust, which is using boxing as a vehicle to inspire self discipline.



Giants Boxing is one of the Eastern and Central Community Trust's donation recipients, helping to give Hastings youth new opportunities to develop self confidence and a sense of belonging.

Former light heavyweight boxing champion, Craig McDougall, heads the youth trust but says the involvement of high-profile community leaders as trustees and management committee members is an important aspect of the trust's success.

"These people and others who frequently visit our gym are like nuggets of gold, connecting these kids with the community. They are people who're respected in the community, lead by example and provide jobs, courses, coaching and advice.

"Kids need to know people and they need to know how to resource things in the community," says Craig, whose goal is to see youngsters with potentially bad reputations become fit, well mannered and active members of our



community. Involving whanau in the process of developing more disciplined, respectful teenagers is a key part of the process.

Craig says the boxing programme is designed to help youth experience the feeling of belonging, believing in themselves and becoming something special by living lives that they value.

A core group of 90 eight to 24 year olds are selected for the boxing academy, although at least another 50 kids come under the youth trust's influence, through lunch time and school programmes.

Ninety percent initially come for the boxing, but they soon find their confidence improving and a feeling of belonging to something special.

A team of 15 volunteers, some qualified coaches, also act as strong role models. There are other young boxers who've been under Craig's tutelage and are now on the

fringe of becoming coaches, showing them there is a pathway to serve, to give back and mentor others.

"We want them to be living lives that they value and we're doing that through the discipline of Olympic style amateur boxing," he says.

Referrals to Giants Boxing come from the police, the Corrections Department, social and youth workers, schools or worried parents, but Craig says the hard work and opportunity the boys experience through boxing gives them a chance to set new goals.

"Of course, we wouldn't be able to create as many opportunities without the fantastic and critical funding from ECCT."

CREATIVITY IS A POSITIVE INFLUENCE

What better way to keep kids off the streets and out of trouble than by tapping into their interests and building on activities they enjoy. International studies show that anti-social behaviour significantly reduces when a young person gets involved with something that they are passionate about and makes them feel good.

This is the philosophy behind the work of the Zeal Education Trust and the Eastern and Central Community Trust is supporting its work in Hawke's Bay through funding of a mobile music studio.

The idea is to use creativity, such as music, to help young people who might otherwise drift into bad behaviours, as a positive influence.

Zeal produces youth events and programmes, and has contracts with local councils. Instead of setting up a dedicated youth centre, Zeal is taking a different approach by converting a shipping container into a unique, mobile music box which can be transported around the district so young people can more easily take part in creative activities.

The interactive studio is equipped with high-spec technology so participants can quickly learn to play the guitar, drums, keyboard and other instruments, or become accomplished DJs, by following easy lessons delivered on iPads. At least 300 kids a week are expected to have fun while learning new skills during holiday programmes, but more than 2,000 a year are likely to benefit.

"In every young person lies untapped creative potential, our goal is to encourage and support those gifts and talents," says Zeal's Hawke's Bay Manager, Mark Wilson. Creative New Zealand research shows that four out of five young people say that they do at least one creative arts activity in their spare time, and the level is increasing.

"We're flipping the usual process on its head by picking up a facility, the music box, and taking it to local neighbourhoods or parks so that they don't have to come to us. We're using creativity to educate and involve at-risk youth, in the same way that sport has been used in the past," he says.

"Funding, such as the Community Trust donation, is vital for our success and we couldn't achieve half of our goals without it."





SINGING FOR SUCCESS

Adversity strikes teenagers randomly, without discrimination or favour, creating despair in families coping with suicide, substance abuse and other devastating social challenges.

Hawke's Bay based Prima Volta Charitable Trust is offering kids a positive escape from social pressures, using music and performance, and bringing together young people who would otherwise never cross each other's paths.

Working alongside international soprano Anna Pierard and numerous other performers and volunteers, 30 teenagers are accepted from a cross-section of secondary schools to be coached and mentored, with their hard work culminating in supportive roles in a major opera production.

The focus extends from singing and stage performance, to backstage skills required to run a successful production. In tandem, the teenagers develop leadership, respect, trust, problem solving, self reliance, team work and self confidence. There is a ripple effect as they find common ground with the adult performers, developing friendships and being part of a collective success.

Prima Volta is also developing a school resource kit for drama and music departments, with some of its selected protégés being trained to help deliver the programme.

For Anna Pierard, a highlight is seeing her young students enjoying their success in front of an applauding audience of family, friends and peers.

"It is so meaningful for them, to receive that applause and recognition."

Another delight is that after just three years in existence, already five teenagers from Prima Volta are now studying music at university, with at least one of them being the first from his wider family to attend tertiary study.

The Eastern and Central Community Trust has contributed funding towards the cost of developing the schools' resource kit.





BELONG, BELIEVE AND BECOME SOMETHING SPECIAL

A Hawke's Bay basketball academy is giving hundreds of young people a chance to create a greater New Zealand, using sport to teach them skills and values that they can hold dear for the rest of their lives.

The academy is headed by Paul Henare, head coach of the New Zealand Breakers and the country's Tall Blacks, and Poara Winitana, a former Olympic, World Champion, Commonwealth Games and Tall Black player.

"We're putting young people in an environment where they're challenged but supported and where we expect them to be great, to be excellent, not just mediocre," says Poare.

Currently there are 72 athletes from Hastings and Napier involved in the selected Leadership Academy group. The seniors must be at the gym for training by 5.45am and the juniors arrive at 6.15am. Attendance is no barrier as the whole family makes a commitment to the programme before members are accepted.

"We're not looking for elite athletes. We're looking for kids with work ethic, commitment and who are coachable so we can build successful people," he says. The academy is bringing in kids from all walks of life.

The young players are expected to coach and provide assistance in their schools, carry out selfless acts of service, giving time, energy and commitment back to the community without expecting any reward. The entire academy works together on an annual community project.

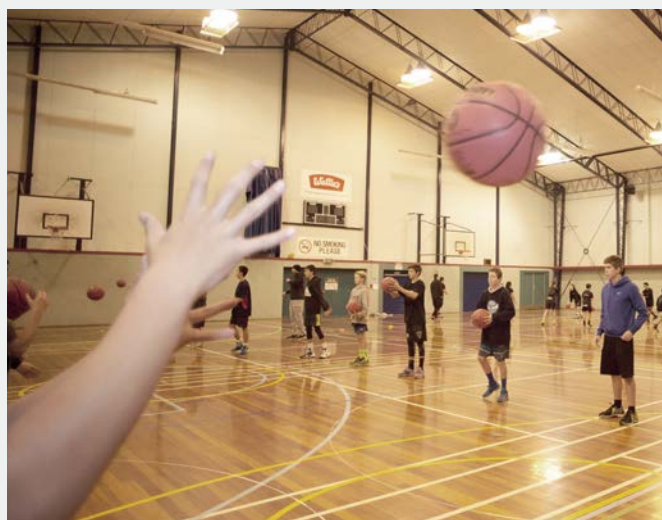
The focus on young people is a great fit with the Eastern and Central Community Trust's objectives and it has donated towards uniforms, training equipment and other costs.

"It is joyous seeing these young people showing initiative, developing leadership attributes and giving back to the community – and they're telling others that it's the right thing to do."

With five years' experience, Paora says the academy is not only changing young lives, but has created some great players. One is playing as a team member alongside Paora in the Hawke's Bay Hawks basketball side and the youngster's back helping with coaching at the academy. Some have studied overseas in American universities, another three leave for overseas study later this year and several are pursuing tertiary study in New Zealand.

Paora says hundreds of kids turn up hoping for academy selection, but those who are disappointed still enjoy the spin-off from their academy peers who become strong role models.

"I can't say enough about the Eastern and Central Community Trust and its support. We are gaining corporate support and we're fundraising and when we get a donation from the Community Trust it demonstrates that the trust sees value in what we're doing and that we are worthy of support."







COVERING ALL BASES

When the Riversdale Surf Lifesaving Club decided to take the opportunity to rebuild when an adjacent and dilapidated toilet block was being replaced, it made sure everyone in the community got behind the project.

Consultation began more than three years ago, liaising with local authorities, a very active ratepayers' association and community groups such as the fishing and golf clubs, to gather input for what a new building might provide. As plans progressed, discussions were also held with schools, REAP, which delivers educational opportunities to rural communities, and sports organisations.

The project group also sought buy-in from other organisations, such as Rural Fire and Civil Defence, Police, Ambulance, Life Flight Trust and Search and Rescue. The plans ensured there would be enough flexibility to create a community hub, with training and outdoor education facilities and rooms where medical professionals could hold clinics for rural residents. As a result of the hard work and canvassing all options, building is due to start on a first-response, first-aid facility incorporating the Surf Life Saving Club. It will provide vital triage facilities for people who get into difficulties on the beach and in the surf, but also on nearby farms and roads.

The club is one of the busiest in New Zealand, providing rescues, beach patrols and first aid and its patrol zone

covers 26 kilometres. Riversdale has around 300 houses and a summertime population of around 2,500. But there are about 300-400 farms in the district.

Getting to know the beach homeowners and offer work to those with relevant business skills, services or equipment has also brought the community together. Project Manager, Dave Rose, says this has provided an opportunity for people to be part of the project and give back to their community but it also rewards families whose children, over decades, have provided lifesaving duties.

A massive fundraising effort was launched and the Eastern and Central Community Trust has also chipped in.

"We wouldn't have crossed the line without the Community Trust. It gives credibility and shows we have a robust case for funding. It's a vital piece in the cog," says Dave.

The existing clubrooms, built more than 50 years ago, don't meet modern standards, are expensive to maintain and don't provide facilities required for beach patrolling and emergency response.

The new building is estimated to cost about \$720,000.





HARMONIOUS IN HOROWHENUA

Ask Corey Kennett about the benefits of a community facility being built on Horowhenua's Playford Park and his answer quickly focuses on the need for organisations in the town to have somewhere to meet.

But the CEO of the Horowhenua Kapiti Rugby Union, who was also involved in the redevelopment of Playford Park, emphasises that a variety of community groups can work harmoniously together without requiring investment in their own facilities.

"No group needs a separate home anymore and groups are realising that financially they just cannot afford to have their own facility," says Corey.

That thinking convinced the Eastern and Central Community Trust to donate to the cost of building a community meeting facility at Playford Park, along with the evidence that multiple users were willing to back the project.

The new building is designed to be used for meetings, training development programmes, seminars and to help attract other events to Horowhenua, creating a sports hub for the district.

A range of sports codes, including rugby, league, softball, touch and athletics already use the park and they, along with a host of other community groups, were quickly able to prove an obvious need for the on-park facilities.

The work involves purpose-building suitable premises, keeping development costs manageable without adding unnecessary extravagance, says Corey.

When it came to proving the demand for a meeting space, Corey says Horowhenua rugby volunteers commonly also volunteer in lots of other agencies so researching the need wasn't difficult.

"That's the beauty of a lovely small town in New Zealand, someone knows someone else and there was such an obvious need that everyone was on board with the project."

Playford Park, redeveloped in 2013, is expanding with more sporting codes using it and people realising the benefit of the multi-use principle.

"People are getting what they desire, but it's not a siloed initiative," he says.

Another potential spin-off from having a warm, dry place to meet will be that volunteers, such as referees, are likely to stay involved in the sport for longer, with sports groups getting a better lifespan from their helpers.

Corey also praises the Community Trust's application process. "We needed to learn how to apply and present our application. We had all the information, but initially we just didn't have the right presentation."





COMMUNITY AGREEMENT TRIGGERS SUCCESS

A community initiative in the Wairarapa has grown into a major project to encircle the Aorangi Forest Park, 80 kilometres south of Masterton, to keep out pests and return it to its former glory.

Some years ago, Martinborough winemaker and conservationist Clive Paton set about gathering ideas and agreement from local landowners, iwi, deerstalkers, Forest and Bird and the Department of Conservation, setting up the Aorangi Restoration Trust, to protect the park. With further involvement from TBfree New Zealand, Federated Farmers, Greater Wellington Regional Council and Victoria University of Wellington, the trust is working to re-establish threatened, native flora and fauna in the park and neighbouring private land.

This dedicated and influential ecological restoration trust continues to ensure the long term vision for the park is

achieved. Volunteers, from throughout the region and as far afield as Wellington and Rangitikei, schools, service clubs and businesses are fundraising, building and laying out nest boxes for Little Blue penguins, monitoring birds and trapping pests.

“This is bringing diverse groups within our community together for a common cause, and working collaboratively,” says Project Manager, Dr Bob Burgess.

An intense predator control project, part-funded by the Eastern and Central Community Trust, involves the use of self-resetting traps to eliminate predators such as stoats,



ferrets, weasels and rats. The new-style traps, which reset themselves, reduce the time volunteers spend servicing the 140 kilometres of border trap lines.

There are plans to put a camera next to the traps to monitor predator activity and the new traps are expected to improve trap line effectiveness.

In five years, Dr Burgess hopes there will be an abundance of native birds, insects, reptiles and recovery of vegetation so the park can be home again to kaka, kakariki, whio (New Zealand's unique blue duck), short and long tailed native bats and rare or locally extinct plants.

COMMUNITY CONSULTATION A WINNER

A \$250,000 donation from the Eastern and Central Community Trust towards the development of a national wildlife recovery centre in Manawatu reflects the environmental, conservation, educational and research capabilities of the project.

The purpose-built aviaries and world-class care will provide for the rehabilitation of native wildlife.

Wildbase Recovery will provide a haven for injured wildlife from throughout New Zealand to recover following specialised treatment at Massey University's Wildbase Hospital.

The idea for a national wildlife facility originally came from a group of local Rotarians who approached the Palmerston North City Council. The proposal was investigated and the result is an amazing example of what can be achieved with community collaboration. Local government, Massey University, Department of Conservation, Rangitāne iwi, Rotary and Lions are working together to ensure a well-planned, targeted outcome by a group of committed partners. There are also numerous volunteers dedicating their time to the project.

With more than 2,800 threatened species, even some of New Zealand's most common native birds are rare by world standards. Wildbase Recovery's patients will come from throughout the country, and upon their full recovery will be released back into the wild in the hope that they will go on to successfully contribute to the survival of their species.

Once established, Wildbase Recovery's nurturing environment will also allow for recuperating wildlife, such as kiwi, takahē, and penguins, to be viewed by the public. Recovery work will be continued by Massey University's world-class wildlife vets, with assistance from community volunteers. The centre will also add a new dimension for young veterinary students and researchers from the university.

The Community Trust donation will contribute to developing educational initiatives. School children throughout New Zealand will be able to follow the recovery of wildlife patients and download education resources online. Schools and the public will be able to visit to view patient journeys back to health, connecting generations of New Zealanders with the conservation of some of our most endangered species.

For tourists, the centre will open up an ever-changing, close-up view of fauna that they would not otherwise be able to see. A feasibility study estimates around 100,000 visitors and more than 200 school excursions annually.





TRUSTEES & STAFF

Standing left to right:

Stephen Kerr (Masterton), Jill Wolland (Administration Officer), Ron Garrod (Masterton), Geoff Milner (Chair, Gisborne), Bruce Mills (Deputy Chair, Feilding), Kaye McAulay (Martinborough), Rose Artemiev (Donations Assessor), Anna Hansen (Hastings), Caren Rangī (Napier), Mark Kilmister (Napier).

Seated left to right:

Patricia Devlin (Administration Officer), Dame Margaret Millard (Palmerston North), Jonathan Bell (General Manager), Shelly Mitchell-Jenkins (Levin), Kelie Jensen (Board Secretary).

Absent:

David Lea (Pahiatua), Robyn Rauna (Gisborne), Neil Attapattu (Donations Assessor).



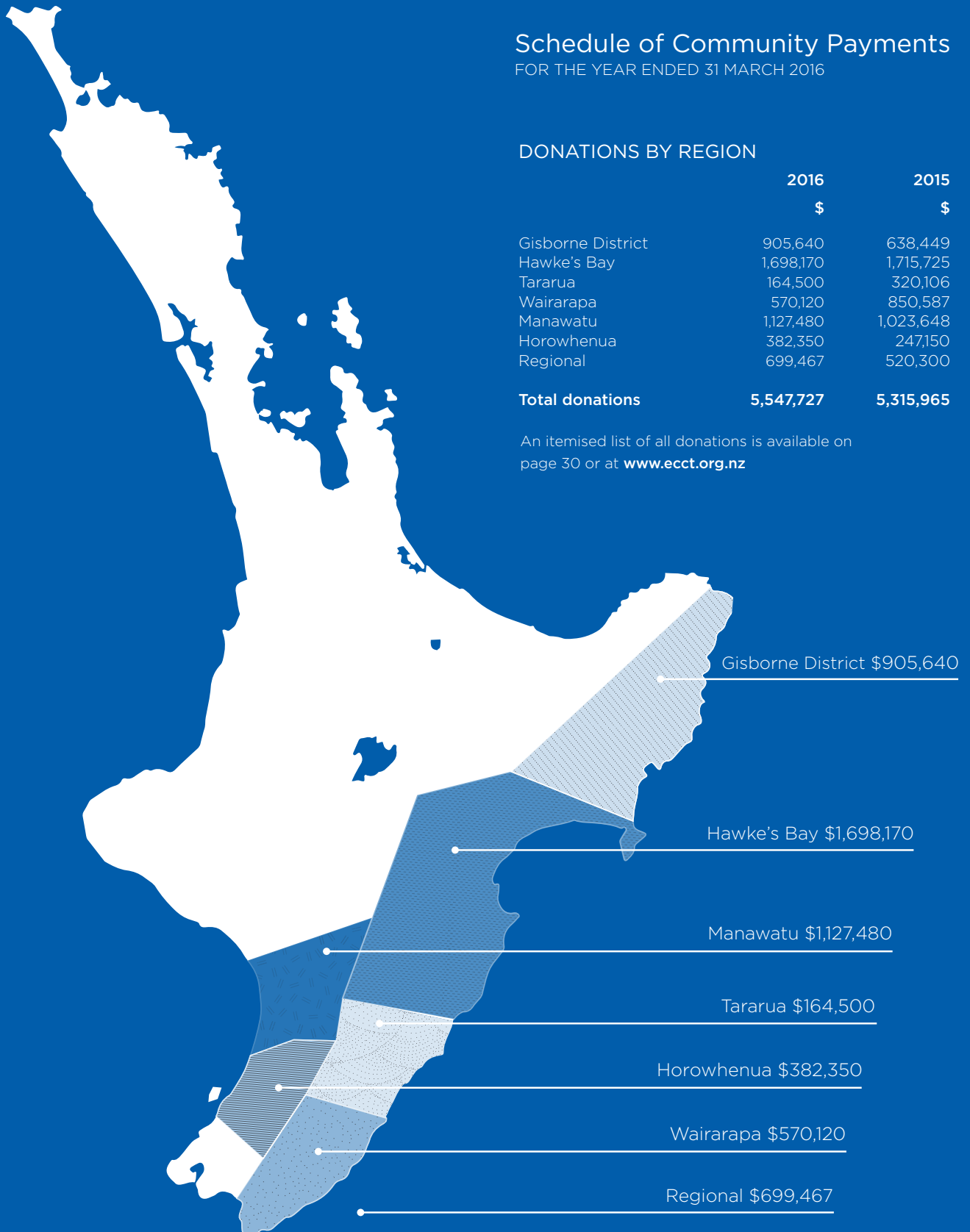
SCHEDULE OF COMMUNITY PAYMENTS

Schedule of Community Payments FOR THE YEAR ENDED 31 MARCH 2016

DONATIONS BY REGION

	2016 \$	2015 \$
Gisborne District	905,640	638,449
Hawke's Bay	1,698,170	1,715,725
Tararua	164,500	320,106
Wairarapa	570,120	850,587
Manawatu	1,127,480	1,023,648
Horowhenua	382,350	247,150
Regional	699,467	520,300
Total donations	5,547,727	5,315,965

An itemised list of all donations is available on page 30 or at www.ecct.org.nz



Summary Financial Statements

Summary statement of comprehensive revenue & expenses

FOR THE YEAR ENDED 31 MARCH 2016

	2016 \$000	2015 \$000
Revenue		
Dividend and interest income	7,060	7,689
Gain/(loss) on derivatives	(2,467)	(323)
Foreign exchange gains/(losses)	7,844	3,854
Changes in fair value of derivatives and investments	(4,120)	9,747
	8,317	20,967
Expenses		
Administrative expenses	474	471
Investment expenses	772	486
Personnel expenses	710	758
Community donations	5,195	5,167
	7,151	6,882
Total comprehensive surplus for the year	1,166	14,085

Summary statement of changes in equity

FOR THE YEAR ENDED 31 MARCH 2016

	2016 Trust Capital \$000	2016 Donation Reserve \$000	Total Equity \$000
Opening balance as at 1 April 2015	143,935	18,397	162,332
Total comprehensive surplus for the year	-	1,166	1,166
Transfer to trust capital	1,295	(1,295)	-
Equity as at 31 March 2016	145,230	18,268	163,498

	2015 Trust Capital \$000	2015 Donation Reserve \$000	Total Equity \$000
Opening balance as at 1 April 2014	140,335	7,913	148,248
Total comprehensive surplus for the year	-	14,085	14,085
Transfer to trust capital	3,600	(3,600)	-
Equity as at 31 March 2015	143,935	18,398	162,333

Summary statement of financial position

AS AT 31 MARCH 2016

	2016 \$000	2015 \$000
Current Assets		
Cash & cash equivalents	6,766	6,807
Derivatives	178	804
Other current assets	23	16
	6,967	7,627
Non-Current Assets		
Investments	159,073	156,785
Other non-current assets	83	106
	159,156	156,891
Total Assets	166,123	164,518
Equity		
Trust Capital	145,230	143,935
Donation Reserve	18,268	18,398
	163,498	162,333
Current Liabilities		
Trade and other payables	181	246
Donation payables	2,444	1,939
	2,625	2,185
Total Equity and Liabilities	166,123	164,518

Summary statement of cash flows

FOR THE YEAR ENDED 31 MARCH 2016

	2016 \$000	2015 \$000
Net Cash flows from operating activities	(32)	(3,984)
Net Cash flows from investing activities	(9)	(16)
Net (decrease)/increase in cash & cash equivalents	(41)	(4,000)
Cash & cash equivalents as at 1 April 2015	6,807	10,807
Cash & cash equivalents as at 31 March 2016	6,766	6,807

Notes to the summary financial statements

FOR THE YEAR ENDED 31 MARCH 2016

1. REPORTING ENTITY

The Eastern and Central Community Trust Inc. (the Trust) is a Charitable Trust domiciled in New Zealand and incorporated in accordance with the provisions of the Community Trusts Act 1999.

The Trust is primarily involved in the management of the investment of assets and the distribution of donations to the community within a designated North Island region of New Zealand.

2. BASIS OF PREPARATION

a) Statement of Compliance

The summary financial statements have been prepared in accordance with the Public Benefit Entity Standards as they relate to summary financial statements (PBE FRS 43) and have been extracted from the full financial statements.

For the year ended 31 March 2016, the Trust prepared its first financial statements using the Not-For-Profit PBE IPSAS – RDR standards as appropriate for Tier 2 Public Benefit Entities.

The Trust has previously reported in accordance with NZ IFRS (PBE). There have been no changes to the recognition and measurement of items classified in the financial statements due to the first time adoption of PBE standards.

b) Basis for Measurement

The financial statements have been prepared on the basis of historical cost modified as defined in the specific accounting policies in the full financial statements (principally fair valuation of investments and derivatives with movements accounted for through surplus or deficit).

c) Functional and Presentation Currency

The summary financial statements are presented in New Zealand dollars and rounded to the nearest thousand dollars.

d) Summary Financial Statements

The summary is extracted from the full financial statements authorised for issue by the Trustees on 27 May 2016. Once issued the Trustees do not have the power to amend these statements. The full financial statements of the Trust have been audited by Staples Rodway who have issued an unmodified audit opinion. Staples Rodway have audited these summary financial statements and found them to be consistent with the full financial statements.

The summary financial statements cannot be expected to provide as complete an understanding as is provided by the full financial statements.

3. RELATED PARTY TRANSACTIONS

From time to time, the Trustees may be involved at the governance level in donation recipient organisations. Total donations paid to these related donee organisation for the year was \$62,000 (2015 nil).

4. CAPITAL COMMITMENTS

The Trust has a commitment of \$0.9 million being the uncalled balance of the private equity fund with Pioneer Capital Partners Limited (2015: \$1.3 million).

The Trustees have resolved to invest \$3.0 million into the Morrison & Co Public Infrastructure Partners LP II (PIP Fund II) and \$6.0 million into the Waterman Capital Fund III. (2015: nil)

A copy of the full financial statements can be obtained from the ECCT website www.ecct.org.nz and is available from the General Manager, PO Box 1085, Hastings 4156, Tel **06 878 7200** or **0800 878 720**, or send a request to enquiry@ecct.org.nz

Independent Auditors' Report

TO THE TRUSTEES OF EASTERN & CENTRAL COMMUNITY TRUST



REPORT ON THE SUMMARY FINANCIAL STATEMENTS

The accompanying summary financial statements of Eastern & Central Community Trust (the Trust) on pages 26 to 28, which comprise the summary statement of financial position as at 31 March 2016, and the summary statement of comprehensive revenue and expense, summary statement of changes in equity and summary statement of cash flows for the year then ended, and related notes, are derived from the audited financial statements of the Trust for the year ended 31 March 2016. We expressed an unmodified audit opinion on those financial statements in our report dated 27 May 2016. Those financial statements, and the summary financial statements, do not reflect the effects of events that occurred subsequent to the date of our report on those financial statements.

The summary financial statements do not contain all the disclosures required for full financial statements under the generally accepted accounting practice in New Zealand. Reading the summary financial statements, therefore, is not a substitute for reading the audited financial statements of the Trust.

This report is made solely to the Trustees, as a body, in accordance with the Community Trusts Act 1999. Our audit work has been undertaken so that we might state those matters which we are required to state to them in an auditors' report and for no other purpose. To the fullest extent permitted by law, we do not accept or assume responsibility to anyone other than the Trustees, as a body, for our audit work, for this report or for the opinions we have formed.

TRUSTEES' RESPONSIBILITY FOR THE SUMMARY FINANCIAL STATEMENTS

The Trustees are responsible for the preparation of a summary of the audited financial statements in accordance with PBE FRS-43: *Summary Financial Statements*.

AUDITOR'S RESPONSIBILITY

Our responsibility is to express an opinion on the summary financial statements based on our procedures, which were conducted in accordance with International Standards on Auditing (New Zealand) (ISA(NZ)) 810 "Engagements to Report on Summary Financial Statements."

Other than in our capacity as auditor we have no relationship with, or interests in the Trust.

OPINION

In our opinion, the summary financial statements derived from the audited financial statements of Eastern & Central Community Trust for the year ended 31 March 2016 are consistent, in all material respects, with those financial statements, in accordance with PBE FRS-43.

A handwritten signature in black ink, appearing to read 'Staples Rodway', with a stylized flourish at the end.

Staples Rodway Hawke's Bay Partnership
12 July 2016
Hastings, New Zealand

List of Donations by Region

FOR THE YEAR ENDED 31 MARCH 2016

GISBORNE DISTRICT

Alzheimers Society Gisborne Inc.	4,000
Aurora Education Foundation	
Charitable Trust	8,000
Campion College	5,000
Central Child Care & Education Centre	2,200
Eastland Helicopter Rescue Trust	10,000
Eastland Sports Foundation	
Education Trust	15,000
Eastland Sports Foundation	
Education Trust	66,440
Eastland Triathlon & Multisport Club Inc.	4,000
Ensemble Impact Educational Trust	2,000
Enterprise Aquatic Swim Team Inc.	10,000
Gisborne & East Coast Cancer Trust	4,000
Gisborne Athletics Club	3,000
Gisborne Bowling Club Inc.	4,000
Gisborne City Vintage Railway Inc.	25,000
Gisborne District Council	180,000
Gisborne East Coast Council of Social Services	4,000
Gisborne Free Kindergarten Assn. Inc.	15,000
Gisborne Gymnastics Club Inc.	4,000
Gisborne Home School Group Inc.	400
Gisborne International Music Competition Charitable Trust	4,000
Gisborne Land Search & Rescue Charitable Trust	4,000
Gisborne Museum of Art & History Trust	4,000
Gisborne Stroke Support Group	4,000
Gisborne Toy Library Inc.	3,500
Gisborne Trampoline Club Inc.	4,000
Gisborne Volunteer Centre	4,000
Hana Konewa, Hine Te Ariki & Taraipine Tutaki Maori Hockey Assn.	1,400
He Awa Ora, He Tai Ora, Healthy Rivers Living Sea Education Trust	4,000
HSOB Sports Club Inc. - Gisborne	15,000
Ka Pai Kaiti Trust	4,000
Gisborne Life Education Community Trust	20,000
Lions Club of Gisborne Wainui Inc.	50,000
Mangapapa Playcentre	3,500
Matawai Memorial Hall Assn. Inc.	10,000
Midway Surf Life Saving Club Inc.	4,000
National Heart Foundation of NZ	4,000
Paikea Kindergarten	10,000
Patutahi Golf Club Inc.	10,000
Poverty Bay Hockey Assn.	4,000
Rape Crisis Gisborne Inc.	4,000
Riding for the Disabled - Gisborne Branch	10,000
SPCA Inc. - Gisborne	4,000
Sunshine Service Inc.	4,000
Supergrans Tairawhiti Trust	4,000
Swim for Life Tairawhiti	15,000
Tairawhiti Beneficiary Advocacy Trust	4,000
Tairawhiti Community Law Trust	4,000
Tairawhiti Multicultural Council	4,000
Tairawhiti Softball Assn. Inc.	25,000
Te Aowera Marae Trustees	10,000
Te Araroa & District Progressive Assn.	2,300
Te Hau ki Turanga Trust	50,000
Te Karaka Area School	15,000

Te Kura Kaupapa Maori	
O Mangatuna	2,900
Te Ora Hou Te Tairawhiti	
Charitable Trust	4,000
Tikapa Marae	17,000
Turanganui A Kiwa	
Voyaging Trust	150,000
Wainui Beach School	3,000
Wainui Surf Life Saving Club	20,000
YMCA - Gisborne Inc.	20,000
TOTAL GISBORNE DISTRICT	\$905,640

HAWKE'S BAY

Age Concern - Hastings	8,000
Age Concern - Flaxmere	15,000
Age Concern - Havelock North	4,000
Age Concern - Napier	4,000
Age Concern - Wairoa	4,000
Air Training Corps - No. 11 Squadron	4,000
Akina Rovers Hockey Club	3,600
Alzheimers Society Napier Inc.	17,000
Amputee Society of Hawke's Bay	
East Coast Inc.	2,000
Arthur Miller School	6,000
Arts & Crafts Corner Otane Inc.	2,000
Aubyn Live Theatre Inc.	4,000
Auckland District Kidney Society Inc.	4,000
Awhina Whanau Services Inc.	8,000
Bay Independent Hockey Club	2,600
Birchleigh Polo Club	4,000
Birthingright Hawkes Bay Child & Family Care Trust	4,000
Bledisloe School	5,000
Bluff Hill Bowling Club Inc.	2,300
Bowls Napier Inc.	1,500
Bowls Omarunui Inc.	2,750
Brain Injury Assn. Hawke's Bay Inc.	4,000
Canteen - Hawke's Bay Branch	4,000
Central Connect Whare	
Manaaki Inc.	2,000
Central Hawke's Bay A&P Society	10,000
Central Hawke's Bay College	4,000
Central Hawke's Bay Food Bank	4,000
Central Hawke's Bay	
Motorcycle Club	500
Central Viking Softball Assn. Inc.	2,700
Chinese Christian Baptist Church	500
Christian Fellowship for Disabled Hawke's Bay	3,000
Christian Love Link	
Napier/Hastings Inc.	3,800
Citizens Advice Bureau - Hastings	4,000
Citizens Advice Bureau - Wairoa	2,500
City of Hastings Pipe Band Inc.	4,000
Connecting for Youth	
Employment Trust	4,000
Creative Hastings Inc.	2,000
Creative Hastings Inc.	24,500
Deco Bay Napier Port Brass Inc.	9,000
Diabetes Hawke's Bay Inc.	4,000
Disability Resource Centre	
Hawke's Bay Inc.	4,000
Epic Ministries Inc.	4,000
Equippers Napier Trust	1,500
Eskview United Assn. Football Club Inc.	4,000
Eventing Central & Southern HB	2,500
Fastpitch Softball Corporation	2,000

Flaxmere Baptist Church	
Community Trust	3,000
Flaxmere Pony Club	4,000
Flemington School	5,000
Four's Company	1,000
Frimley Park Kindergarten	3,500
Gliding Hawke's Bay & Waipukurau Inc.	4,000
Hastings Baptist Church	50,000
Hastings Blue Light Ventures Inc.	4,000
Hastings Boys' High School	5,000
Hastings Bridge Club Inc.	3,500
Hastings Community Patrol Inc.	2,000
Hastings District Council	125,000
Hastings Foodbank Trust	4,000
Hastings Girls' High School	3,000
Hastings High School Old Girls	
Netball Club Inc.	1,300
Hastings Women's Refuge Inc.	4,000
Havelock North Canoe Polo Club Inc.	4,000
Havelock North Cricket Club	4,000
Havelock North Rugby Football Club Inc.	1,000
Havelock North Squash Rackets Club Inc.	18,000
Hawke's Bay A&P Society Inc.	20,000
Hawke's Bay Canoe Club Inc.	4,000
Hawke's Bay Chess Inc.	2,400
Hawke's Bay Cricket Assn.	4,000
Hawke's Bay Event	
Equipment Trust	4,000
Hawke's Bay Golf Club Inc.	4,000
Hawke's Bay Hang Gliding & Paragliding Club Inc.	400
Hawke's Bay Karting Club Inc.	4,000
Hawke's Bay Kayak Racing Inc.	4,000
Hawke's Bay Live Poets' Society	500
Hawke's Bay Multiple Sclerosis Society	4,000
Hawke's Bay Orchestral Society	4,000
Hawke's Bay Parents' Centre Inc.	3,500
Hawke's Bay Regional Orchestra	4,000
Hawke's Bay Road Safety	
Compliance Trust	4,000
Hawke's Bay Softball Assn.	4,000
Hawke's Bay Tertiary Chaplaincy Trust	1,500
Hawke's Bay Wheelchair Sports Club Inc.	9,000
Hawke's Bay Youth Trust	4,000
Hayseed Trust Inc.	7,000
Hearing Assn. - Hastings	4,000
Heart to Heart Parent Infant Classes	1,000
Heretaunga Croquet Club Inc.	24,900
Heretaunga Women's Centre	4,000
Hohepa Homes Trust Board	18,000
Iwitea Marae Committee	3,000
Kahungunu Health Services	
Charitable Trust	3,500
Kaisen Charitable Trust	2,000
Kaiwaitau Kids Club	3,000
Keirunga Gardens Arts & Crafts Society Inc.	20,000
Keirunga Potters	2,000
Kiwi Adventure Trust	4,000
Kowhai Special School	24,900
Leg Up Trust	3,500
Lindisfarne College	2,500

List of Donations by Region

FOR THE YEAR ENDED 31 MARCH 2016

Living Waters Wesleyan Church - Napier	2,000	Rotary Club of Waipukurau Charitable Trust	4,000	Whatever It Takes Trust Inc.	8,000
Lucknow School	20,000	RSPCA - Central Hawke's Bay	4,000	Youth Development Hawke's Bay	4,000
Mangateretere School	4,000	RSPCA - Hastings & Districts	4,000	Youthquest Hawke's Bay Charitable Trust	4,000
Maraenui Golf Club Inc.	9,000	Rugby League Hawke's Bay Inc.	4,000		
Marching Hawke's Bay Assn. Inc.	1,000	Sacred Heart College, Napier	4,000	TOTAL HAWKE'S BAY	\$1,698,170
Menz Shed Napier Trust	20,000	Scout Assn. - Havelock North			
Multicultural Assn. Hawke's Bay Inc.	1,000	Scout Group	4,000	TARARUA	
Napier Aquahawks Swim Club Inc.	4,000	Scout Assn. - Westshore Sea		Aotea Sports Club Inc.	1,700
Napier Boys' High School	5,000	Scout Group	4,000	Cape Turnagain Golf Club Inc.	4,000
Napier City Council	4,000	SPCA - Hawke's Bay	4,000	Dannevirke & Districts Home	
Napier City Council	200,000	Spirit of Napier Lions Club Inc.	1,000	Budgeting Service Inc.	7,000
Napier Civic Choir Inc.	1,000	Sport Hawke's Bay	106,120	Dannevirke Community Toy Library	3,000
Napier Community Foodbank Trust	4,000	Sportslink Charitable Trust	10,000	Dannevirke Pony Club	3,400
Napier Community Patrol Inc.	9,000	Springhill District Society Inc.	3,100	Dannevirke Rugby Football	
Napier Dog Training Club	4,000	Squash Eastern Inc.	1,400	Sub Union	4,000
Napier Family Centre Inc.	4,000	St John's Presbyterian Church - Hastings	3,500	Eketahuna Golf Club Inc.	4,000
Napier Girls' High School	4,000	St Joseph's School - Hastings	3,000	First Years Pre-School Inc.	3,500
Napier Old Boys' Marist Cricket Club	4,000	St Mary's School - Hastings	3,000	Hearing Assn. Inc. - Southern Hawke's Bay	1,700
Napier Old Boys' Marist Rugby Football Club Inc.	4,000	St Therese Hall Whakatu Trust	4,000	Holyoake Kindergarten	1,500
Napier Operatic Society Inc.	30,000	St Vincent de Paul		Makirikiri Marae Komiti	4,000
Napier Performing Arts Competitions Society Inc.	1,500	Society - Hastings	4,000	NZ Pacific Studio Inc.	4,000
Napier Technical Old Boys' Cricket Club	2,500	St Vincent de Paul Society - Napier	4,000	NZ Equestrian Federation - Central & Southern Hawke's Bay	700
Napier Technical Sports & Recreational Organisation Inc.	15,000	STAROS - Hawke's Bay Affected by Suicide Support Group	200	Pahiatua & Districts Museum Society Inc.	1,500
Napier Toy Library	4,000	Study to Succeed - Tongan Homework Club	3,000	Pahiatua Bowling Club Inc.	1,800
National Youth Drama School Trust	4,000	Summer in the Parks	3,000	Pahiatua Community Services Trust	4,000
Nga Tukemata O Kahungunu Charitable Trust	4,000	Sustaining Hawke's Bay Trust	15,000	Pahiatua Football Club	4,000
Ngati Kahungunu Iwi Inc.	4,000	Takapau Golf Club	4,000	Pahiatua Kindergarten	3,500
Ngati Kahungunu Runanga Arts & Culture Trust	20,000	Takapau School	4,000	Pahiatua On Track Inc.	50,000
NZ Deerstalkers Assn. - Napier	2,000	Tamatea Primary School	10,000	Pahiatua School	5,000
Ocean Beach Kiwi Surf Life Saving Club Inc.	7,000	Tamatea Rugby & Sports Club Inc.	17,000	Pahiatua Toy Library Inc.	1,700
Omni Gymnastic Centre Inc.	4,000	Taradale Cricket Club Inc.	3,000	Rotary Club of Dannevirke	15,000
Onga Onga Golf Club	10,000	Taradale Pottery Club Inc.	3,000	Scout Assn. - Dannevirke	
Onga Onga School	20,000	Taradale Table Tennis Club	900	Scout/Cub Group	3,100
Parkinsonism Society - Hawkes Bay Inc.	4,000	Tauparanui Ki Heretaunga Te Kohanga Reo	3,500	SPCA - Dannevirke	4,000
Parkvale School	8,000	Te Aute Private Burial Ground	4,000	Tararua Aquatic Community Trust	10,000
Paul Henare & Paora Winitana		Te Awanga Kindergarten	3,500	Tararua Learning Inc.	4,000
Basketball Academy Trust Board	15,000	Te Haroto Marae Committee	3,500	Te Wananga O Tamaki Nui A Rua	3,800
People's Advocacy Society Inc. - Napier	3,700	Te Matau a Maui Voyaging Trust	4,000	Whiti Te Ra Marae Maori Reservation	3,100
Petane Marae	60,000	Te Taiwhenua O Heretaunga Trust	4,000	Woodville Old Folks Assn. Inc.	4,000
Piping & Dancing Assn. of NZ Inc. - Hawke's Bay	1,000	Te Whakaritorito Trust	4,000	Woodville Playcentre	3,500
Pleroma Trust	30,000	Technology in Schools Education Trust	4,000	TOTAL TARARUA	\$164,500
Porritt Primary School	20,000	The Limit Hawke's Bay Trust	4,000		
Pourerere Beach Improvement Assn.	2,000	Tidal Arts Inc.	2,500	WAIRARAPA	
Presbyterian Support Services - East Coast	3,200	Toki Inc.	4,000	Access Radio Wairarapa Charitable Trust	5,000
Prima Volta Charitable Trust	4,000	Tu Tangata Maraenui Trust	18,000	Age Concern Wairarapa	
Public Dreams Charitable Trust	4,000	Twynford Raupare Memorial		WOOPS Inc.	3,000
Purena Koa Rehua Youth Services		Recreational Centre Inc.	4,000	Alzheimers Disease & Related	
O Heretaunga Inc.	4,000	U Turn Trust Board	4,000	Dementia Society Wairarapa Inc.	4,000
Putorino School	5,000	Volleyball Hawke's Bay	2,200	Anglican Parish of South Wairarapa	4,000
Radio Kidnappers Charitable Trust	1,800	Volunteering Hawke's Bay	9,000	Aorangi Restoration Trust	18,000
Radio Te Wairoa Community		Waiohiki Community Charitable Trust	2,000	Aratoi Regional Trust	15,000
Radio Charitable Trust	4,000	Waipawa Golf Club Inc.	1,400	Autism New Zealand Inc.	4,000
Riding for the Disabled - Napier Group	4,000	Waipawa Primary School	8,000	Autism Wairarapa Charitable Trust	4,000
RNZ Plunket Society - Hawke's Bay Area Inc.	4,000	Waipawa Sports Club Inc.	4,000	Bowls Wairarapa Inc.	4,000
		Waipukurau Blue Light		Carterton Community	
		Ventures Inc.	2,500	Courthouse Trust	20,000
		Wairoa A&P Society	15,000	Carterton Golf Club	7,000
		Wairoa District Heritage & Museum Trust	20,000	Carterton Swimming Club Inc.	10,000
		Wairoa Young Achievers Trust	8,000	Carterton Tennis Club Inc.	600
		Wairoa Youth Services Trust	4,000	Citizens Advice Bureau - Wairarapa	3,000
		Wellstop Inc. - East Coast	4,000	Cobblestone Trust	12,000
		Westshore Surf Life Saving Club Inc.	7,000	East Coast Rugby Football Club Inc.	4,000
				Fab Lab Masterton Trust	5,000

List of Donations by Region

FOR THE YEAR ENDED 31 MARCH 2016

Greytown Community Sport & Leisure Society Inc.	15,000
Greytown Menz Shed Inc.	17,500
Henley Men's Shed Inc.	3,800
Hospice Wairarapa Community Trust Board	40,000
Incredible Families	4,000
King Street Artworks Inc.	4,000
Kopuaranga Hall Society Inc.	4,000
Kuranui College	12,700
Learning Disabilities Assn. Wairarapa	3,000
Life Education Trust - Wairarapa & Southern Hawke's Bay	20,000
Lighthouse Church Charitable Trust	4,000
Mangatarere Restoration Society Inc.	3,000
Martinborough Lawn Tennis Club	35,000
Martinborough Rugby Football Club Inc.	2,500
Masterton A&P Assn. Inc.	4,000
Masterton Foodbank Inc.	4,000
Masterton Golf Club Inc.	4,000
Masterton Motorplex Inc.	4,000
Masterton Red Star Rugby Club	4,000
Masterton Savage Club Inc.	4,000
Oasis Charitable Trust - Wairarapa	4,000
Parent to Parent Wellington Region	3,600
Red Star Squash Rackets Club Inc.	4,000
Returned Services Assn. Inc. - Masterton	4,000
Riversdale Surf Life Saving Club Inc.	50,000
Road Safety Education Ltd	4,000
Schizophrenia Fellowship Wairarapa Branch Inc.	7,000
Shear History Trust	30,000
Solway College Old Girls' Assn. Inc.	1,000
Sport Wellington	61,320
Stopping Violence Services Wairarapa Inc.	4,000
Street Youth Ministries Trust Inc.	4,000
Summer Shakespeare Trust	1,200
Wairarapa & Ruahine Aero Club Inc.	1,800
Wairarapa Arts Festival Trust	20,000
Wairarapa Branch of the NZ Society of Genealogists	2,000
Wairarapa Community Centre Trust	4,000
Wairarapa Community Counselling Centre Inc.	4,000
Wairarapa Community Law Centre	4,000
Wairarapa Cricket Assn. Inc.	4,000
Wairarapa Green Dollar Exchange Inc.	3,000
Wairarapa Health History Group	4,000
Wairarapa Hockey Assn. Inc.	4,000
Wairarapa Mathematical Assn. Inc.	1,000
Wairarapa Rescue Trust	2,500
Wairarapa Show Jumping Group	10,000
Wairarapa Stars Trust	4,000
Wairarapa Women's Centre Inc.	4,000
Woops-A-Daisies Leisure Marching Team	600
Young Men's Christian Assn. Greater Wellington Inc.	4,000
TOTAL WAIRARAPA	\$570,120

MANAWATU

MANAWATU	
Amesbury Christian Counselling Services Inc.	4,000
Active Minds Aotearoa	10,000
Adult Literacy Palmerston Nth Inc.	4,000
Age Concern New Zealand Inc.	4,000
Alliance Francaise de Palmerston Nth Inc.	4,000
Amitabha Buddhist Centre	4,000
Anglican Social Work Trust Palmerston Nth Inc.	1,500
Arohanui Hospice Service Trust	8,000
Ashhurst Aquanauts	1,000
Ashhurst Community Trust	30,000
Ashhurst Playcentre	2,700
Ashhurst Pohangina Pony Club	1,140
Awahou School	2,000
Awahuri Forest/Kitchener Park Trust	500
Bhutanese Society of Palmerston Nth	4,000
Bike Manawatu Inc.	4,000
Brain Injury Assn. Central Districts Inc.	4,000
Canteen - Manawatu	4,000
Central Districts Dressage Group	2,000
Community Arts Palmerston Nth Inc.	2,000
Environment Network Manawatu Inc.	4,000
Events Manawatu Trust Board	2,000
FAHS - Feilding High School	3,400
Feilding & District Rose Society Inc.	1,700
Feilding Golf Club Inc.	7,000
Financial Freedom Trust	4,000
Floral Art Society NZ Inc. Manawatu	1,200
Free Store Charitable Trust	25,000
Freyberg High School	30,000
Halcombe Playcentre	3,500
Halcombe Rugby Football Club	4,000
Hapaitia Te Kohanga Reo	3,500
Hato Paora College	5,000
Highland Home Christian Camp	1,500
Himatangi Beach Bowling Club	4,000
Hockey Manawatu Inc.	4,000
Hokowhitu School	12,000
Horizons Regional Council	20,000
Ice Breaker Aquatics Inc.	4,000
Interdenominational Tertiary Chaplaincy Trust Board	4,000
Johnston Park Bowls Inc.	4,000
Journeys To Wellbeing - Mana o te Tangata Trust	3,200
Learning and Growing Together Trust	4,000
Life Education Trust - Manawatu	20,000
Lions Club of Fitzherbert	
Charitable Trust	1,400
Mana Tamariki Inc. Society	2,000
Manawatu Blokart Club Inc.	4,000
Manawatu Chinese Community Trust	3,500
Manawatu Community Trust	80,000
Manawatu Embroiderers' Guild Inc.	1,000
Manawatu Home Budgeting Service Inc.	4,000
Manawatu Horowhenua Tararua Diabetes Trust	4,000
Manawatu Multicultural Council	4,000
Manawatu Pony Club Inc.	4,000

Manawatu Pottery Society Inc.	500
Manawatu Pregnancy Centre Trust	4,000
Manawatu Rugby Football League Referees Assn.	900
Manawatu Rugby Union Inc.	15,000
Manawatu Rural Support Service Inc.	4,000
Manawatu Savage Club Inc.	4,000
Manawatu Sports Foundation	106,120
Manawatu Stewart Centre Trust	4,000
Manawatu Toy Library Assn. Inc.	4,000
Manawatu Youth Orchestra Inc.	850
Manchester House Social Services Society Inc.	8,000
Massey University	2,000
Massey University Students' Alpine Club	4,000
Methodist Social Service Centre	4,000
Milson School	750
Milverton Kindergarten	3,500
Netball Manawatu Centre Inc.	4,000
NZ Down Syndrome Assn.	4,000
NZ Miniature Horse Assn.	2,500
NZ Chinese Assn.	
- Manawatu Branch	4,000
Palmerston Nth Boys' High School	30,000
Palmerston Nth Community Services Council Inc.	4,000
Palmerston Nth Golf Club	3,000
Palmerston Nth Marist Football Club Inc.	4,000
Palmerston Nth Neighbourhood Support Groups Inc.	1,100
Palmerston Nth Public Sculpture Trust	4,000
Palmerston Nth Street Van Inc.	4,000
Palmerston Nth Surf Life Saving Club Inc.	7,000
Palmerston Nth Theatre Trust Inc.	4,000
Palmerston Nth Women's Health Collective	4,000
Palmerston Nth Women's Refuge Inc.	18,000
Parent to Parent - Manawatu	4,000
Parentline Manawatu Inc.	4,000
Parkinsonism Society - Manawatu	4,000
Passionart NZ Inc.	4,000
Phoenix Inc. - Palmerston Nth	4,000
Pipes and Drums of Palmerston North & Districts	800
Prisoners Aid & Rehabilitation Society - Manawatu	4,000
Rangiwahia Environmental Arts Centre Trust Inc.	4,000
RECAP: Society for the Resilience and Engagement of the Community of Ashhurst & Pohangina	4,000
Red Kiwi Orienteering Club	3,000
Regent Theatre Trust	30,000
RNZ Plunket Society - Manawatu/Wanganui	12,000
RNZE Charitable Trust	2,300
Rose Gardens Croquet Club Inc.	1,300
Roslyn Kindergarten	3,500
Rotary Club of Palmerston North	1,000
Royal NZ Army Medical Corps Fund	4,000
Ryder Cheshire Foundation	1,500
Samaritans Manawatu Inc.	4,000
Scout Assn. - Milson Scout Group	3,500
Scout Assn. - Roslyn Scout Group	4,000
Shepherd's Rest Trust	4,000

List of Donations by Region

FOR THE YEAR ENDED 31 MARCH 2016

Social Socks Charitable Trust	4,000
Somerset Kindergarten	3,500
Special Olympics Manawatu	4,000
SPELADD NZ Inc.	4,000
St James' Catholic School	3,500
Taekwondo Manawatu	3,300
Te Kawau Rugby Football Club Inc.	13,000
Te Kohanga Reo O Te Reo Tupua	
O Awapuni	520
Te Kura Kaupapa Maori O Manawatu	7,000
Te Manawa Services	
Charitable Trust	4,000
The Palmerston North Squash Club Inc.	25,000
Tu Toa Project Charitable Trust	15,000
U3A Manawatu Inc.	1,500
United Cricket Club Inc.	1,800
United Cricket Club Inc.	10,000
Unity Singers Club	3,500
Volunteer Resource Centre	
- Manawatu & Districts	4,000
Whakarongo School	20,000
Wildbase Recovery	
Community Trust	250,000
TOTAL MANAWATU	\$1,127,480

HOROWHENUA

Adult Day Care Centre	1,000
Age Concern - Horowhenua	4,000
Arohamai Aotearoa Literacy Inc.	800
Athletic Rugby Football Club	
Levin Inc.	4,000
Coast Access Radio Trust	2,500
Foxton Beach Senior Citizens Assn. Inc.	8,000
Foxton Combined Churches' Choir	500
Foxton Golf Club Inc.	4,000
Foxton Horse Tram Society Inc.	3,500
Foxton Squash Rackets Club Inc.	10,000
Hearing Assn. - Horowhenua	4,000
Horowhenua Agricultural Pastoral & Industrial Assn.	20,000
Horowhenua College	5,000
Horowhenua District Council	170,000
Horowhenua District Health Transportation Trust	4,000
Horowhenua Events Centre Trust	8,000
Horowhenua Kapiti Cricket Assn. Inc.	18,000
Horowhenua Kapiti Rugby Football Union Inc.	40,000
Horowhenua Kids Teens & Family Trust	4,000
Koputaroa School	2,700
Levin Badminton Club Inc.	1,000
Levin Christian Care Trust	4,000
Levin College Old Boys Rugby Club Inc.	4,000
Levin Gymsports Inc.	4,000
Levin Interchurch Foodbank	4,000
Levin Men's Shed	700
Levin Soccer Club Inc.	4,000
Levin Swimming Club Inc.	1,000
Life Education Trust	
- Kapiti/Horowhenua	4,000
Life to the Max Horowhenua Trust	8,000
NZ Radio for the Print Disabled Inc.	1,800
Opiki Hall Society Inc.	8,500

Parkinsonism Society	
- Kapiti Horowhenua	4,000
Pipes and Drums of Horowhenua	1,500
Scout Assn. - Te Awahou	
Scout Group	2,850
Te Awahou Maori Women's Welfare League	2,000
Te Timatanga Hou Kindergarten	3,500
Totara Trust - Horowhenua	4,000
TS Tutira Horowhenua Branch of Sea Cadet Assn.	1,500
Vintage Car Club	
- Horowhenua Branch	2,000
Whenua Fatales Roller Derby League	2,000
TOTAL HOROWHENUA	\$382,350

REGIONAL

Alan Duff Charitable Foundation	3,800
Arthritis Foundation of NZ Inc.	8,000
Asthma & Respiratory Hawke's Bay Services Trust	4,000
Athletics Hawke's Bay Gisborne Inc.	4,000
Central Districts Hockey Inc.	4,000
Chamber Music NZ Trust	8,000
Community Trust of Southland	1,717
Connected Media Charitable Trust	15,000
Eastern Canoe Polo Inc.	350
English Language Partners NZ Trust	6,000
Environmental Education for Resource Sustainability Trust	4,000
Equestrian Sports NZ Inc.	4,000
Haemophilia Foundation of NZ	4,000
Havelock Ski Club Inc.	10,000
Institute for Child Protection	
Studies Trust	4,000
JTD Solutions Limited	4,000
Macular Degeneration NZ	4,000
Muscular Dystrophy Assn. of NZ - Wellington Branch	4,000
Number 4 District Federation of NZ Soccer Inc.	3,000
NZ Federation of Family Budgeting Services Inc.	4,000
NZ Howard League for Penal Reform Inc.	4,000
Performing Arts Competitions Assn. of NZ Inc.	4,000
Presbyterian Support Central	4,000
Project Litefoot Trust	4,000
RMH (Ronald McDonald House)	
Auckland Trust	4,000
Royal NZ Ballet	8,000
Royal NZ Coastguard Boating Education Ltd	6,000
Scout Assn. of New Zealand	4,000
Sir Edmund Hillary Outdoor Pursuits Centre NZ	3,600
SPELD NZ Inc.	7,000
Stage Challenge Foundation	4,000
Stroke Foundation of NZ	
- Central Region	20,000
Summer Reading Programme	250,000
Surf Life Saving NZ Inc.	8,000
Taki Rua Productions Society Inc.	4,000
Talk Link Trust	4,000
Tangata Whenua Community & Voluntary Sector Research Inc.	4,000
The House of Grace Trust	4,000

The Parenting Place	16,000
The Salvation Army NZ Trust	80,000
The Tapestry Trust of NZ	2,500
Waiapu Anglican Social Services Trust Board	40,000
Wairarapa Dressage Group	2,000
Wairarapa Rural Education Activities Programme	93,500
Wellington Museums Trust Inc.	4,000
Zeal Education Trust	15,000
TOTAL REGIONAL	\$699,467

SUMMARY TOTALS

TOTAL DONATIONS APPROVED BY REGION AS AT 31 MARCH 2016

Gisborne District	\$905,640
Hawke's Bay	\$1,698,170
Taranua	\$164,500
Wairarapa	\$570,120
Manawatu	\$1,127,480
Horowhenua	\$382,350
Regional	\$699,467

Total Donations Approved	\$5,547,727
---------------------------------	--------------------

Directory

Trustees		Retirement Date
GEOFF MILNER	Gisborne Chair	May 2019
BRUCE MILLS	Feilding Deputy Chair	May 2016
ROBYN RAUNA	Gisborne	May 2017
ANNA HANSEN	Hastings	May 2016
MARK KILMISTER	Napier	May 2019
CAREN RANGI	Napier	May 2018
DAVID LEA	Pahiatua	May 2017
RON GARROD	Masterton	May 2019
STEPHEN KERR	Masterton	May 2019
KAYE MCAULAY	Martinborough	May 2016
DAME MARGARET MILLARD	Palmerston North	May 2017
SHELLY MITCHELL-JENKINS	Levin	May 2017
GENERAL MANAGER	Jonathan Bell	
BANKERS	Westpac	
AUDITOR	Staples Rodway Hawke's Bay	
FINANCIAL ADVISORS	MCA NZ Limited	
REGISTERED OFFICE	1st Floor Westerman's Building 102-104 Russell Street South PO Box 1058, Hastings 4156	



Eastern & Central
**COMMUNITY
TRUST**

Helping fund a stronger community

1st Floor, Westerman's Building
102 - 104 Russell Street South, PO Box 1058, Hastings 4156
Fax: 06 878 9550, Ph: 06 878 7200, FreePhone: 0800 878 720
Email: enquiry@ecct.org.nz or visit www.ecct.org.nz